



INSTRUCTION BULLETIN

No. 9008540
Machine: T16
Published: 07-2011
Rev. 00

NOTE: DO NOT DISCARD the Parts List from the Instruction Bulletin. Place the Parts List in the appropriate place in the machine manual for future reference. Retaining the Parts List will make it easier to reorder individual parts and will save the cost of ordering an entire kit.

NOTE: Numbers in parenthesis () are reference numbers for parts listed in Bill of Materials.

Installation instructions for **kit number 9008033**

SYNOPSIS:

This kit contains the parts needed to install the deluxe seat onto T16 scrubbers.
Please follow step-by-step instructions.

SPECIAL TOOLS / CONSIDERATIONS: NONE

(Estimated time to complete: 1 hour)

PREPARATION:

1. Park the machine on a clean level surface, turn off the machine, and remove the key.

FOR SAFETY: Before leaving or servicing machine, stop on level surface, turn off machine, and remove key.

2. Disconnect the battery cables from the batteries.



WARNING: Always disconnect battery cables from machine before working on electrical components.

INSTALLATION:

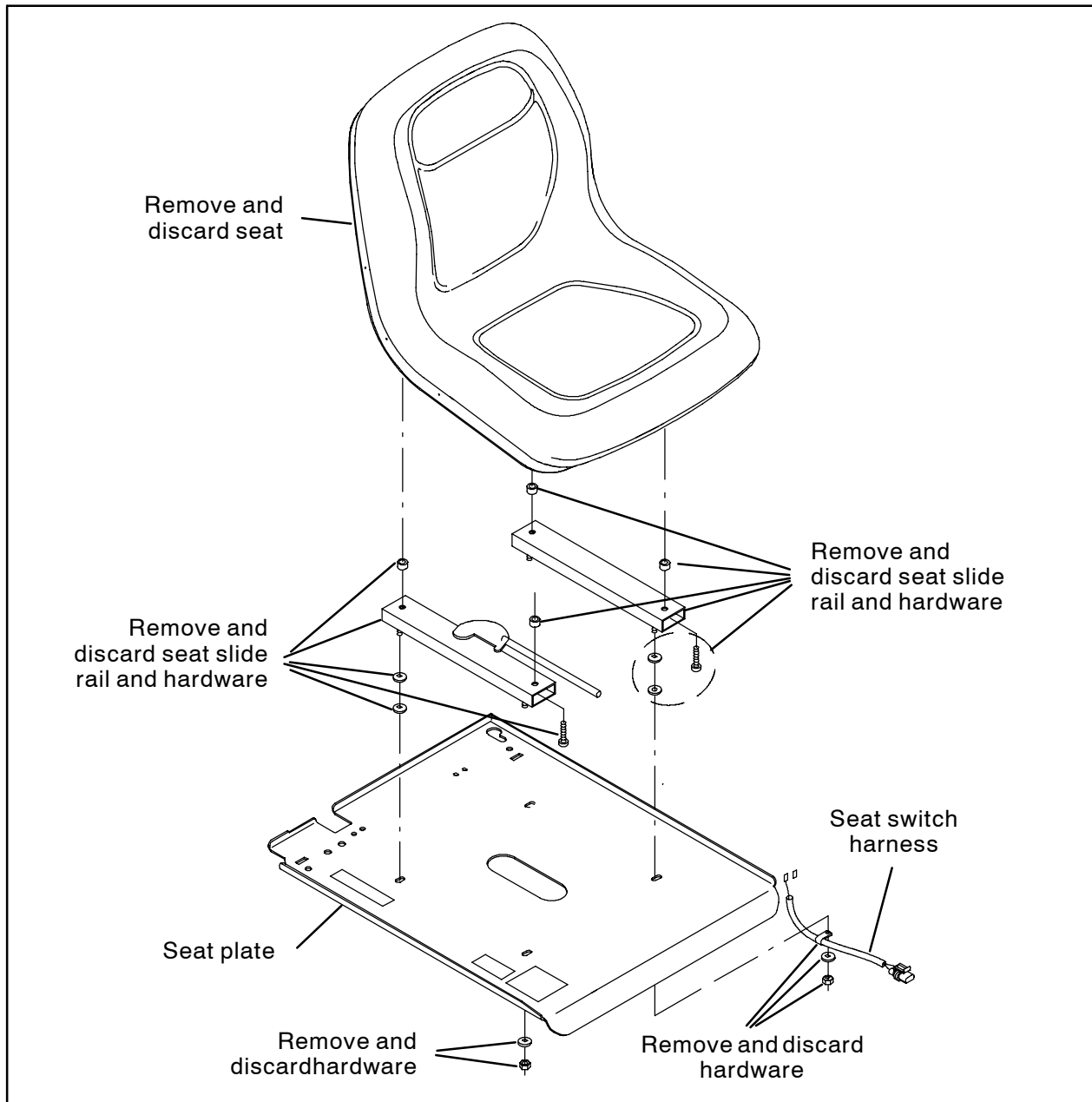


FIG. 1

1. Remove the existing seat assembly from the machine. Set the seat switch harness aside. Discard the removed seat and all mounting brackets and hardware. Refer to Fig. 1.
2. Use a SEMS M8 hex screw (9) to install the latch bracket (8) onto the machine. Refer to Fig. 2.
3. Use two M5 hex screws (11) to install the latch (10) onto the latch bracket (6). Refer to Fig. 2.
4. Use two M8 hex screws (7) and two flat washers (4) to install the latch assembly assembled in the previous step onto the seat plate. Refer to Fig. 2.
5. Use a hex screw (16) and a flat washer (17) to install the seat belts (15) onto the suspension seat (1). Refer to Fig. 2.
6. Install the seat switch (2) into the seat switch receptacle located on the bottom of the suspension seat (1). Refer to Fig. 2.

7. Position the suspension seat (1) onto the seat plate and connect the seat switch harness to the seat switch.
8. Install the cable clamp (12) onto the seat switch harness. Refer to Fig. 2.
9. Use four hex nuts (3) four flat washers (4), and four spacers (5) to install the suspension seat (1) and cable clamp (12) onto the seat plate. Refer to Fig. 2.
10. Use two SEMS hex screws (14) to install the arm rest (13) onto the suspension seat (1). Refer to Fig. 2.
11. Reconnect the battery cables to the batteries.
12. Start and test the machine. Sit in the operator seat, place the directional switch into the forward position, and press the propel pedal. The machine should move forward. Get out of the operator seat, place the directional switch into the forward position, and press the propel. The machine should not move.

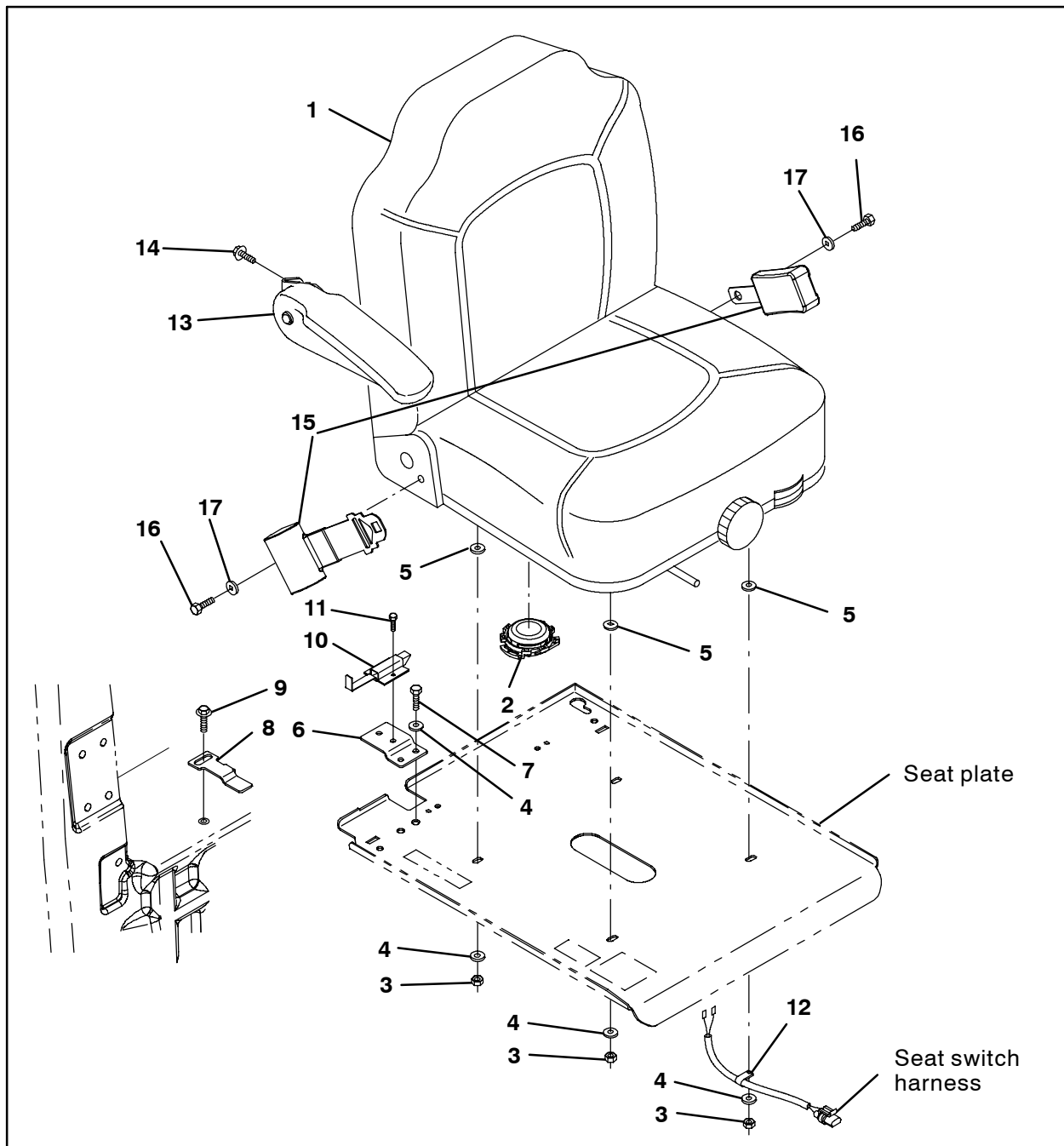


FIG. 2

Bill Of Materials For Seat Kit, Dlx, CI [T16] - 9008033

Ref.	Tennant Part No.	Description	Qty.
▽	9008033	Seat Kit, Dlx, CI [T16]	1
▲	1 223595	Seat, Suspension [Michigan Model V-5200]	1
▲	2 223078	Switch, Seat, No [Delta 6500]	1
▲	3 01760	Nut, Hex, Lock, .31-18, NL, Thin	4
▲	4 32491	Washer, Flat, 0.31, Std	6
▲	5 386785	Spacer, Latch, Fltr	4
▲	6 1059310	Bracket, Mtg, Latch	1
▲	7 16735	Screw, Hex, M8 X 1.25 X 16, 8.8	2
▲	8 1066535	Bracket Wldt, Latch	1
▲	9 1020341	Screw, Hex, M8 X 1.25 X 20, SS, SEMS	1
▲	10 1025736	Latch	1
▲	11 12312	Screw, Hex, M5 X 0.80 X 12, 8.8	2
▲	12 46236	Clamp, Cable, Stl, 0.25D X 0.56W, 1Hole	1
▲	13 1061917	Armrest, RH	1
▲	14 16953	Screw, Hex, .31-18 X 0.75, SEMS	2
▲	15 1062792	Seatbelt, Retractable	1
▲	16 39663	Screw, Hex, .44-20 X 1.00, G5	2
▲	17 1063373	Washer, Flat, 0.45B 1.00D .12, SS	2

TENNANT COMPANY
P. O. Box 1452
Minneapolis, MN 55440-1452